



B550 & B700 Operators Manual



Isotech North America
158 Brentwood Drive, Unit 4
Colchester, VT 05446

Phone: (802) 863-8050
Fax: (802) 863-8050

Email: sales@isotechna.com
Web: www.isotechna.com

Table of Contents

1. INTRODUCTION..... 3

2. SAFETY..... 3

2.2 REMOVING THE INSERTS 4

2.3 OVER TEMPERATURE CUT OUT 5

3. SETTING UP THE CALIBRATOR..... 6

3.1 GETTING STARTED..... 6

3.2 POWER ON/OFF SWITCH..... 6

3.3 OPERATING MODE 6

3.4 SETTING THE TEMPERATURE..... 8

3.5 CONTROLLER SETTINGS 8

3.6 PRE-TUNE FACILITY 10

3.7 SELF-TUNE FACILITY 10

3.8 CHANGING FROM CENTIGRADE TO FAHRENHEIT MODE..... 10

3.9 CHANGING TO 0.1°C RESOLUTION 12

4. THE SERIAL INTERFACE FOR THE CONTROLLER (IF FITTED)..... 13

4.1 FACTORY DEFAULT SETTINGS..... 13

5. ACHIEVING THE BEST RESULTS USING YOUR METAL BLOCK CALIBRATOR..... 14

5.1 PROBE POSITIONING AND USE OF INSERTS..... 14

5.2 THERMAL CONTACT 14

5.3 USE OF CUSTOM DRILLED BLOCKS 15

5.4 USE OF "TWIN" INSERTS..... 15

5.5 SUPPLY VOLTAGE VARIATIONS..... 16

5.6 AMBIENT TEMPERATURE VARIATIONS 16

6. THE INDEPENDENT INDICATOR (IF FITTED) 16

6.1 FACTORY DEFAULT SETTINGS..... 17

6.2 LINEARISING THE INDEPENDENT INDICATOR..... 17

7. SPECIFICATIONS..... 21

7.1 GENERAL 21

7.2 ENVIRONMENT 21

8. CLEANING AND MAINTAINANCE 22

8.1 CLEANING 22

8.2 PREVENTATIVE MAINTENANCE 22

8.3 GENERAL SAFETY WARNING 22

8.4 INTERNAL FUSE REPLACEMENT 22

8.5 PERIODIC MAINTENANCE 23

9. SERVICE AND WARRANTY..... 23

9.1 TECHNICAL SUPPORT..... 23

9.2 RETURNED INSTRUMENTS..... 23

9.3 DOCUMENTATION..... 23

9.4 REPAIR QUOTATIONS 24

10. APPENDIX 1 PERFORMANCE CHARTS..... 25

11. APPENDIX 2 WIRING CONNECTIONS FOR DIN CONNECTOR 26

12. APPENDIX 3 FACTORY SETTINGS 27

1. Introduction

Automatic Systems Laboratories would like to thank you for purchasing this B series Metal Block Calibrator. The Calibrator is supplied in a fully operational state, but ASL strongly suggest that these brief operating instructions and guidelines be read before starting to use the apparatus. Should you have any difficulty understanding the instructions, or other questions regarding this Calibrator, please call our Customer Support Group.

2. Safety



WARNING This apparatus is capable of reaching up to 700 °C in normal operation. Burns to the skin can result through careless or negligent use. The calibrator has been configured at ASL, only change the configuration settings after reference to this handbook. Please follow the guidelines below as a minimum procedure for safe operation.

- i) Always handle the Calibrator as if the block is hot. Do not touch the top surface of the block.
- ii) Position the Calibrator in such a way that it cannot be accidentally knocked from the bench.
Pay careful attention to the positioning of the mains lead to avoid tripping.
- iii) Do not cover the Calibrator at any time, or leave flammable material close to the Calibrator.
- iv) When removing hot probes from the block, always place them away from flammable material and make sure that they will not be accidentally touched by anyone.
- v) Keep all types of liquids away from the Calibrator when in operation.

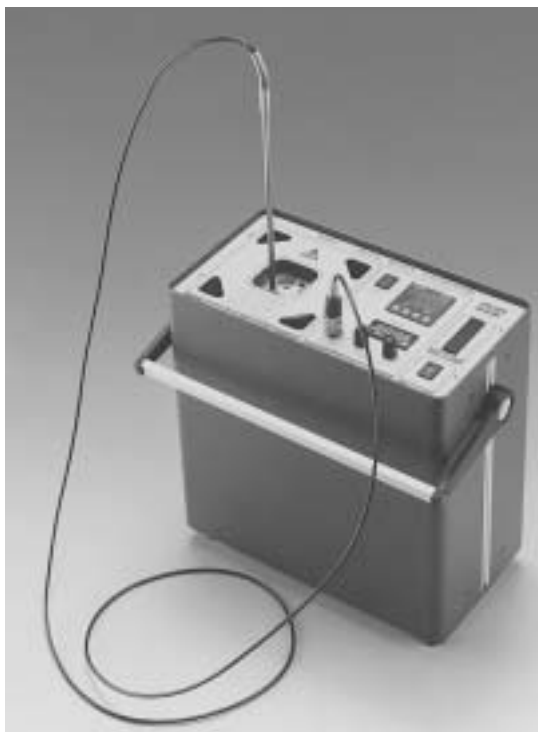


Figure 1. Model B550 with Independent Indicator

- vi) Do not use any liquid in the probe holes of the block. (The use of a few drops of demineralised water to improve probe/block contact when calibrating below 70°C (94°F) is permissible with great care. Do not introduce water into the Calibrator unless the block is cold, and the supply is disconnected. Drain the water by inverting the Calibrator after use. Do not boil off remaining water. Care should be taken to avoid any hot inserts falling out of the inverted block.)
- vii) The Calibrator may be switched off and disconnected from the supply without harm even when at maximum temperature. However, the cooling of the block will take considerably longer if this is done, and no temperature indication will be present to warn others that the block may still be hot. The block will take several hours to cool to ambient temperature if the fan is left running (approximately 5 hours to cool to ambient temperature from 550°C / 1022°F).
- viii) If any part of the Calibrator except the block should become hot during use, suspend the operation and disconnect the supply.

2.2 Removing the inserts

- i) Use the wire tool to lift the insert. Only lift the insert to a level where you can hold it using the pliers. **Do not try to completely remove the insert using the wire tool.** The wire tool does not provide enough control to allow it to be used to carry the insert.
- ii) Using the pliers, lift the insert clear of the block and put it in a safe place.

2.3 Over temperature cut out

ASL Metal Block Calibrators are fitted two independent over temperature cut outs which are operated by:

- a) Excessive block temperature
- b) Fan failure

To reset the calibrator press the start switch. If the light does not go out the fault condition still exists.

Allow the calibrator to cool before retrying.



WARNING

DO NOT hold your finger on the start switch for more than a few seconds.

Pressing the start switch resets the thermal trip circuit and may apply power to the heater.

If the cut out activates repeatedly check the controller settings, if these are correct the calibrator has a fault. **DO NOT USE** the calibrator until the fault condition has been removed.

See Section 8.5 for periodic maintenance.

3. Setting up the Calibrator

The Calibrator is designed to give the best performance when operated in a constant temperature environment without draughts. The calibrator should therefore be positioned away from air conditioners and direct sunlight. Please read Section 5 of this manual to achieve the best results from the Calibrator.

3.1 Getting Started



WARNING: Ensure the correct line voltage fuse is fitted before turning on. Plug in the mains lead and turn on the calibrator using the green switch marked supply on the top panel. The cooling fan will start and the controller will start its self check procedure.

Voltage	Fuse
230V	F3.15A 250VAC (3.15 Amp Quick blow)
115V	F6.3A 250VAC (6.3 Amp Quick blow)

3.2 Power ON/OFF switch

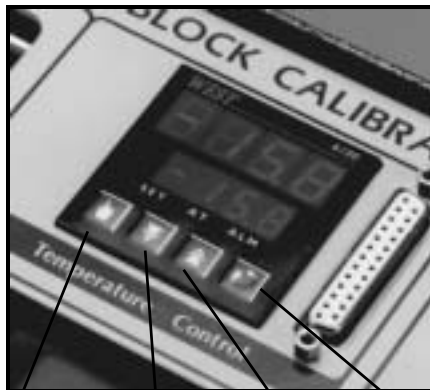
I = Power ON

O = Power OFF

The power switch itself will be illuminated (green), when the Block Calibrator power is switched ON.

Care should be taken not to limit access to the power ON/OFF switch.

3.3 Operating Mode



Auto/Manual Key Low Key High Key Function Key

Figure 2. The Controller keys

Whilst operating, the controller will show two temperatures on the controller panel, and the supply switch will be illuminated.

The temperature shown at the top of the controller display is a block temperature. At start up this can be expected to be close to room temperature unless the calibrator has been used recently.

The lower of the two displayed temperatures is the controller set point. For safety, all equipment leaving the factory is set to 20°C (68°F). The last setpoint is retained in the controller memory.

3.4 Setting the Temperature

- i) Press the "Function" Key as shown above.
- ii) The lower display will change to SP (set point).
- iii) Use the up arrow or the down arrow keys to set the desired temperature on the upper display. The calibrator will begin to heat, or cool. Keeping the up or down arrow key depressed will cause the rate of the displayed setpoint to accelerate. Momentary release of the button will bring the rate of change back to a low speed.
- iv) After entering the new set point, the operator may return to the previous display by pressing the "Function" Key a second time.

Note: if this step is omitted, the display will return automatically after some seconds.

- v) The upper display shows the actual block temperature, the lower display shows the new Set Point temperature.
- vi) Depending on the ambient temperature and the set point temperature, the controller will take some time to stabilise at the new temperature. The stabilisation process is best watched by reading the reference probe inserted in the block. It is normal for the calibrator controller to indicate an overshoot of some degrees on the first approaching a new setpoint.

3.5 Controller Settings

The Calibrator controller has been set to optimise stability over the full operating range of temperatures. Customers who wish to customise these settings to optimise a particular temperature are referred to the WEST 6100 handbook supplied with the unit. ASL cannot accept any responsibility for damage caused by incorrect setting of the controller parameters by our customers. The Controller configuration settings should not be changed under any circumstances as these relate to the range and alarm functions. Customers are advised to note the configuration settings on their unit before making any changes. See appendix 3 for factory settings.

The controller can be set to tune its own P.I.D parameters. This is not normally necessary except when a greatly varying load (high thermal loss to the block) occurs and the temperature stability of the block is affected.

There are two methods of tuning. Pre-tuning and self tuning, although the latter is not recommended as it can affect the stability at the resolution we are looking for:-

3.6 Pre-Tune Facility

Pre-Tune may be activated as follows:-

- i) With the Controller showing its normal Operator Mode display, depress and hold down simultaneously the Up and Down keys (whereupon the numeric displays will start to flash) until AT indicator blinks once (after approximately three seconds - numeric displays will become static).
- ii) Release the Up and Down keys and depress and hold down the "Scroll" key for three seconds (approximately). If the process variable is greater than 5% of input span from the setpoint, the AT indicator will then flash, indicating that the Pre-Tune facility is engaged and operating.
If the process variable is within 5% of input span from the setpoint, or if an erroneous key sequence is used, the Pre-Tune facility will not be engaged.

To disengage the Pre-Tune facility:-

- iii) Depress and hold down simultaneously the Up and Down keys (whereupon the numeric displays will start to flash) until the AT indicator blinks once (after approximately three seconds - numeric displays will become static).
- iv) Release the Up and Down keys and depress and hold down the "Scroll" Key for three seconds (approximately). The AT indicator will then be continuously OFF, indicating that the Pre-Tune facility is disengaged.

Note: Since the Pre-Tune facility is a single-shot operation, it will automatically disengage itself once the operation is complete.

3.7 Self-Tune Facility

The self tune facility as opposed to the pre-tune method can be set on at anytime and will attempt to modify the terms whilst controlling. We don't recommend that this feature is left on permanently because it can affect the stability at the resolution we are looking for.

The self tune facility is invoked by pressing and holding both up and down keys simultaneously until the AT light blinks once. Then release the keys and press the "hand" symbol key. The AT light will then illuminate permanently to show that self tuning is in progress. To cancel, the same procedure is employed.

Note: The Self-Tune facility will not engage if the setpoint is currently ramping.

3.8 Changing from Centigrade to Fahrenheit mode

The Calibrator can operate in Centigrade or Fahrenheit mode.

Firstly the controller parameters need to be noted if they are different to the default ASL settings (for example where different P.I.D terms are used).

To do this enter the "LOC" code (default 8 set by ASL) by pressing the "scroll" button and the up arrow together, the display will show "ULOC" in the lower section. Enter the LOC code using the up and down arrows and press "scroll" to accept.

The controller will now display the operating parameters which can be scrolled through to note the values. Do this by repeatedly pressing the "scroll" key, when back at the start press "scroll" and up together to exit, and the set LED will extinguish. To Alter the range from °C to °F, the input range code has to be changed, a list of these codes can be found in Appendix A of the West Instruments Site Manual. The relevant range codes are listed under the title "For RTD Inputs". The default codes for units leaving the factory are given in Appendix 3 of this manual. To enter the new range the configuration mode has to be accessed. To do this turn the power off. Turn the power back on and within 30 seconds of power-up, hold down the up and "scroll" keys simultaneously for five seconds.

The controller will then show the current input code selected. This can be changed with the up and down arrow keys. As soon as the value is changed the upper display will flash indicating that the new value has yet to be confirmed, when the value is as required it may be confirmed by pressing the "hand" key, whereupon the display will become static. Next return from the configuration mode by pressing "scroll" and up together. Having returned the display will show the temperature, but with all the decimal points showing, indicating that the controller parameters need resetting.

Note: If the input code is changed the values in the set-up mode will return to the default values.



WARNING

The setpoint maximum (SP_{hi}) will default to the upper limit of range, as will the high alarm, this would be 800°C or 1472°F with the 1° range.

To enter the set-up mode use the "LOC" code as above and re-enter the values noted down except the values in °C or °F which will need changing to the new scale. This is very important for safety. The alarm values will need particular care.

The default values can be found for °C or °F in Appendix 3 of this manual.

Another precaution would be to indicate on the front panel that the units are now set to Fahrenheit in case someone assumes Centigrade and sets the temperature dangerously high.

The block calibrator is further protected by an independent thermal cut out circuit.

3.9 Changing to 0.1°C Resolution

Operation to Change from 1°C resolution (700°C maximum temperature) to 0.1°C resolution (537°C maximum temperature).

This is an operation virtually identical to changing from Centigrade to Fahrenheit where a new range of temperature measurement is chosen. See Appendix 3 for the 4 ranges suitable for the Calibrator. The controller parameters are cleared when the range is changed, so if one range can be fixed upon all the better.

The code number for the Ambient to 537°C (0.1°C) range is 7222, the 1°C resolution range code is 7220.

Now follow the procedure in section 4.9 to set in the new range code.

Note: The range code 7220 invokes a range with the controller of 0 to 800°C. It is for this reason the P.I.D terms will change with this increased input range.

4. The Serial Interface for the controller (if fitted)

The controller may be optionally fitted with an RS232 or an RS485 interface. Refer to the WEST 6100 controller manual for instructions on using the RS232/RS485.

Connections for the interfaces are:

<i>RS485</i>	<i>25 Way 'D' type socket</i>
"A" or XMT + terminal	Pin 2
"B" or XMT - terminal	Pin 15
<i>RS232</i>	<i>25 Way 'D' type socket</i>
CTS	Pin 5
R x D	Pin 3
T x D	Pin 2
DTR	Pin 20
GND	Pin 7
DSR	Pin 6

4.1 Factory Default Settings

RS232: Factory set to 4800 baud, even parity, 7 data bits and 1 stop bit.

RS485: As above, Address 1.

5. Achieving the best results using your Metal Block Calibrator

This section of your manual is written to help you achieve the best results from your Metal Block Calibrator. ASL has tested this product extensively and the results of these tests can be found in the appendices of this manual. Your Metal Block Calibrator is designed to provide a reference temperature of high stability under the correct operating conditions. The absolute value of this temperature must be measured using a reference temperature probe. The indicated temperature on the temperature controller is not calibrated and cannot be used as a reference. ASL can provide a calibrated reference probe and indicator installed in the Calibrator, or alternatively a more versatile and accurate standalone system. Please ask your representative for details.

5.1 Probe positioning and use of inserts

To ensure the correct orientation of twin holes inserts in the Metal Block Calibrator the Calibrator is fitted with location spigots in each well. When fitting inserts, ensure that the locating hole in the bottom of the insert mates with the locating spigot.

The top surface of the block is not insulated and therefore has a greater heat loss than the sides and bottom of the block. This gives rise to a variation in temperature at different vertical positions in the block. (see Appendix 1). The block is designed to achieve the minimum possible variation in temperature at any horizontal plane within the block.

To avoid inaccuracies caused by the vertical temperature variations explained above, the user should use a reference probe of the same type as the probe under test. If this is not possible, the reference probe should be designed to match the physical and thermal characteristics of the probe under test as closely as possible. The insertion depth of the Test probe measure point should be exactly the same as the reference probe measure point.

5.2 Thermal Contact

To achieve the best possible accuracy, all probes that are inserted in the block should have the largest possible contact area with the metal of the block. Users operating at low temperatures may benefit from improving contact by the use of a little demineralized water in the block holes. In this case the few drops of water required should be introduced into a cold block with the supply disconnected. Under no circumstances should any other fluid be used as this will cause a build up of residue and may present a fire hazard. Any remaining water should be removed from the Calibrator at the end of the test by inverting the Calibrator. Care should be taken to avoid any hot inserts falling out of the inverted block.

ASL provide a standard block which is drilled to accommodate 4 T100 type PRTs directly inserted in the block. The dimensions of these holes are optimised for the T100, and should not be used for other probe types. A further 4 Inserts (see below) are also provided with the standard block.



WARNING:

Insertion of the incorrect probe type into these holes may result in inaccurate measurements and/or the probe becoming stuck in the block.

In addition to the predrilled holes, ASL provides inserts which can be factory drilled to order, or drilled by our customers to accommodate different types of probe. As may be seen from the test results in

Appendix 1, the temperature difference between inserts may be several tenths of a degree. As previously observed for the probe/block contact area, the contact area between the insert and the block may vary, and the inclusion of a second metal/air/metal boundary will degrade the accuracy that can be obtained when using inserts.

To obtain maximum accuracy, the customer has two routes to solving this measurement problem.

5.3 Use of custom drilled blocks

ASL can provide custom drilled blocks to accommodate most types of probe. This method insures the minimum number of metal/air/metal boundaries between the reference probe and the probes under test, and is ideal for the customer who wishes to qualify multiple probes simultaneously. (Remembering that the probes should all be of the same type including the Reference probe).

5.4 Use of "Twin" Inserts

ASL recommends the use of inserts drilled to accommodate 2 probes within the same insert. These "Twin" inserts may be factory or customer drilled, and allow the qualification of up to 4 different probe types in one calibration run. (Each insert must contain one reference probe and one probe under test.). ASL is happy to provide blank inserts for our customers to drill themselves. Due to the possibility of inserts becoming stuck in the block if incorrectly sized, we recommend the use of factory supplied blanks, Twin inserts should be placed in the block as shown in the Fig.3 in order to ensure that the probes under test are equi-distant from the centre of the block. The locating spigot at the bottom of the well will then engage.



Figure 3. Recommended orientation for twin inserts.

5.5 Supply Voltage Variations

As with all electrical equipment, your B series Metal Block Calibrator is designed to operate most efficiently on a stable electrical supply. Transient variations in supply voltage will vary the quantity of heat output by the Heating element, and may adversely affect the temperature stability of the Calibrator. Users should therefore make every effort to ensure a stable supply during testing and calibration.

5.6 Ambient Temperature Variations

The Calibrator is unaffected by changes in ambient temperature taking place over several hours. Sudden temperature changes will cause a temporary disturbance in block temperature. For best results, we recommend that the Calibrator is used in a draught free environment of constant temperature.

6. The Independent Indicator (if fitted)

The calibrator may be optionally fitted with an independent temperature monitor.

The monitor is linked to a 5 way DIN connector and terminal block on front of the controller
(see Appendix 2 for wiring details).

To use the independent monitor connect a PRT to either the DIN connector or the terminal block, insert the PRT into the block. The monitor will now display the block temperature in degrees Centigrade. If you have ordered an Independent Indicator to be set up in thermocouple mode, then a thermocouple needs to be connected instead of a PRT.

Connections for the interfaces are:

<i>RS485</i>	<i>25 Way 'D' type socket</i>
"A" or XMT + terminal	Pin 2

"B" or XMT - terminal	Pins 14, 15
<i>RS232</i>	<i>25 Way 'D' type socket</i>
T x D	Pin 2
R x D	Pin 3
GND	Pin 7
CTS } Linked	Pin 5
internally	
RTS -	Pin 4
DSR } Linked	Pin 6
internally	
DTR -	Pin 20

6.1 Factory Default Settings

The Independent Indicator is factory set to 9600 baud, 8 bit, no parity and 1 stop bit.

6.2 Linearising the Independent Indicator

The following instructions tell you how to linearise the Independent Indicator.

The Indicator must initially be set to suit the reference probe and temperature range of the block
(See Figure 4)

Range	Resolution	Accuracy
-200 to +850°C	0.1°C	± 0.5°C
-60 to +130°C	0.02°C	± 0.5°C

The reference Pt100 probe and block has to be calibrated as a system to give the required number of 'temperature pairs' (expected and actual), up to a maximum number of 17.

The above temperature pairs are then entered into the 'linearisation' feature of the independent indicator (CSLin), using the calibration procedure (See Figure 5)

Note: The setup menu is selected by pressing the AL1 and F1 keys simultaneously.

The expected readings (test temperature) are 'OU 1' to 'OU 17'.

The actual readings (Indicator reading) are 'IN 01' to 'IN 17'.

The system is then calibrated a second time and the initial errors between the test temperature and the Block -II Independent Indicator should be reduced.

Example:

1st calibration results at 5 points:

Test Temperature	Indicator Reading
49.861	50.2
100.012	100.1
249.102	249.2
419.875	420.2
549.890	550.1

Enter the data pairs as below:

IN 01 = 50.2	OU 01 = 49.861
IN 02 = 100.1	OU 02 = 100.012
IN 03 = 249.2	OU 03 = 249.102
IN 04 = 420.2	OU 04 = 419.875
IN 05 = 550.1	OU 05 = 549.890

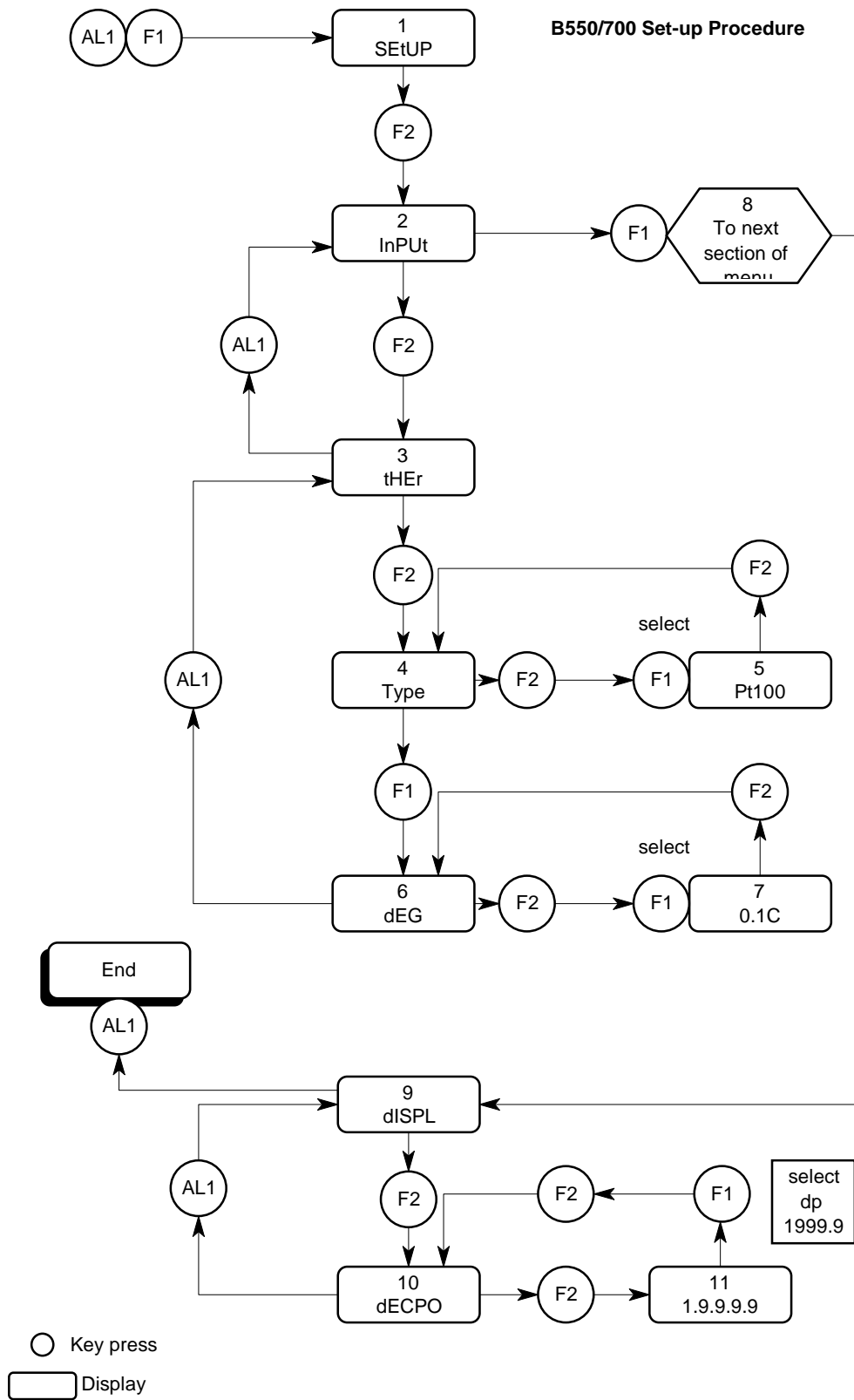


Figure 4. Independent Indicator initial set up.

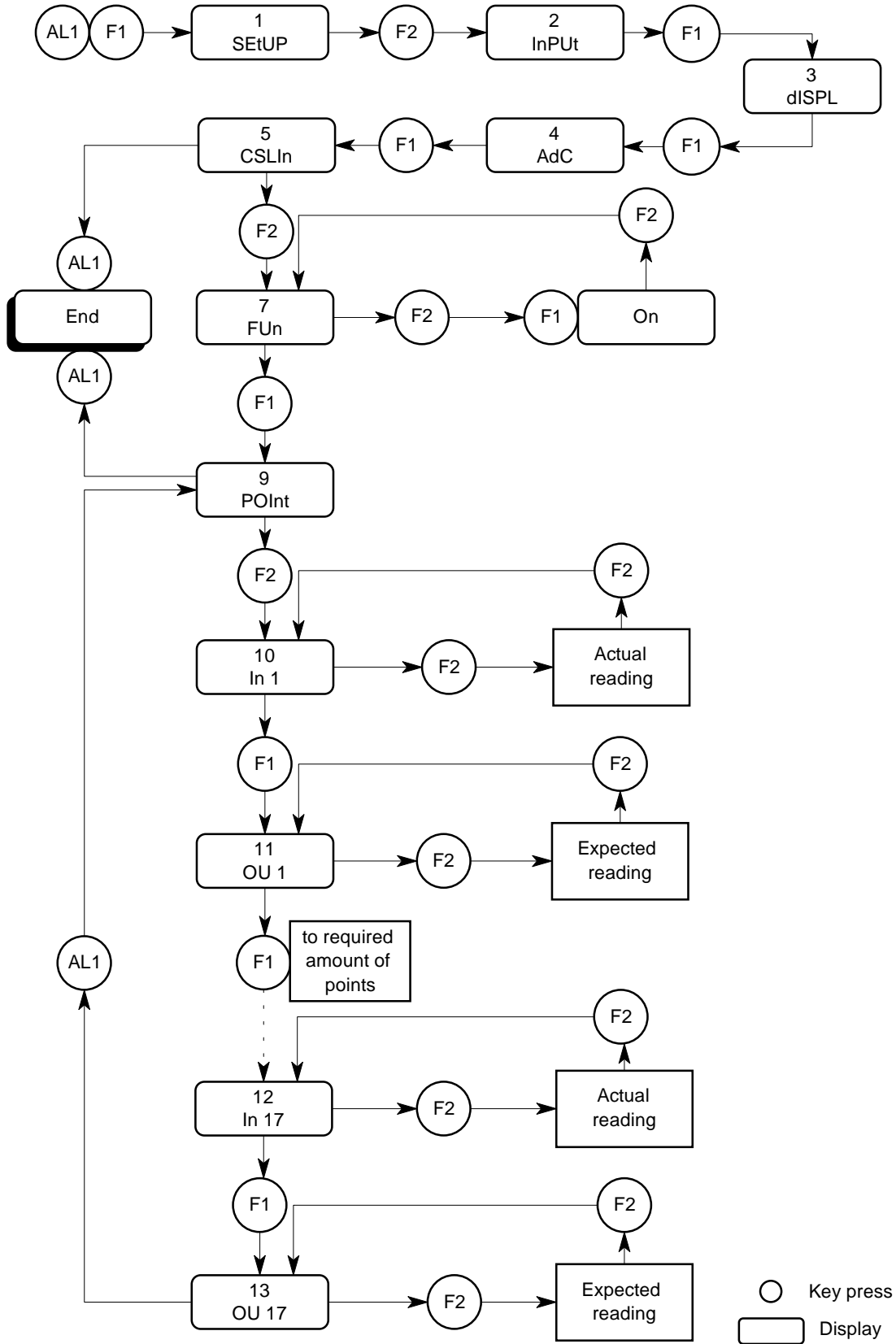


Figure 5. Independent Indicator Calibration Procedure.

7. Specifications

7.1 General

Model	Well Depth (mm)	Well Dia. (mm)	Insert Length (mm)	Temperature range in normal ambient of 22 °C	Stability
B550	155	2 x 19	150	+35 °C to +550 °C	±0.05 °C
				+95 °F to +1022 °F)	±0.09 °F
	150	4 x 6.35	N/A		
B700	155	2 x 18	150	+50 °C to +700 °C	±0.05°C
				+122 °F to +1292 °F)	±0.09°F
	150	4 x 6.35	N/A		

7.2 Environment

Operating Temperature: 15°C to 25°C for full accuracy, 0°C to 50°C maximum.

Humidity: Specified to 90% RH at 40°C non-condensing.

Power Requirements: 240VAC +10% /-15%, 220VAC +10% /-15%,
120VAC +10% /-15%, 100VAC +10% /-15%

Frequency range: 47-63 Hz.

Power consumption: B550 550 VA Max.

B700 550 VA Max.

Dimensions: 305mm wide, 165mm depth, 325mm height
(12" wide, 6.5" depth, 12.8" height)

Weight: B550 7.5 Kg (16.5 lbs)

B700 9 Kg (19.8 lbs)

8. Cleaning and Maintenance

8.1 Cleaning

Make sure the Block Calibrator is turned off and unplug the mains supply cable.

Clean the outside of the instrument with a soft, clean cloth dampened with mild detergent. Do not allow water to enter the instrument.



WARNING Never use alcohol or thinners as these will damage the instrument.

Never use a hard or abrasive brush.

8.2 Preventative Maintenance



WARNING Regular inspection of the mains supply cable is required to ensure that

the insulation is not damaged.

8.3 General safety Warning



WARNING If the Block Calibrator is used in a manner not specified by ASL, then

the protection provided by the instrument may be impaired.

8.4 Internal fuse replacement



WARNING The RS232 to RS485 converter (if fitted) is protected by an internal fuse.

It is recommended that this is replaced by a competent ASL trained technician.

Fuse type: T200mA (250 VAC)
(200mA slow blow)

8.5 Periodic Maintenance



WARNING The block calibrator should be checked every 2 years to have the safety cut out tested.

ASL offer a comprehensive service for all its products. Consult your distributor for details.

Alternatively, a technical procedure for verifying operation of the cutout is available from ASL's customer support group. This operation should only be carried out by a suitably qualified engineer.

9. Service and Warranty

Block Bath equipment and accessories, (unless stated otherwise), are covered by a 12 month warranty for parts and labor, but not including costs incurred in returning it to the factory for repair, from the date of dispatch from Automatic Systems Laboratories.

9.1 Technical Support

For all technical support, repair, warranty and service inquiries please contact:

ASL Inc.,
Druck Incorporated
4 Dunham Drive
Fairfield
CT 06812
USA

Telephone: 978 658 0000
Fax: 978 658 5444
E-Mail aslinc@aslinc.com
Web page: www.aslinc.com

9.2 Returned Instruments

All returned goods should be sent carriage paid, insured and packed well, to the above address.

9.3 Documentation

The shipment should include:

- i) Your goods return note, a delivery note or an export invoice stating clearly **GOODS RETURNED FOR REPAIR.**
- ii) Your Company / Establishment order or contract reference number.

- iii) The name of your purchasing and technical contact.
- iv) A brief fault report.

9.4 Repair Quotations

We shall be pleased to advise estimated repair costs upon receipt and initial inspection of returned goods.

10. Appendix 1 Performance charts

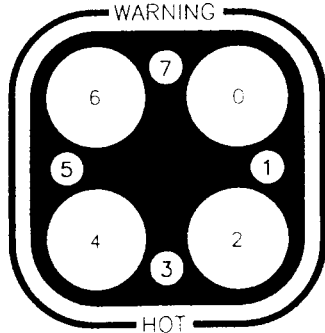


Figure 6.

B550 Block Calibrator Test data at 50 DegC, 26/01/94

Statistics	Ch0	Ch1	Ch2	Ch3	Ch4	Ch5	Ch6	Ch7
Mean	50.056	49.346	50.027	49.380	50.039	49.543	50.054	49.369
Median	50.056	49.347	50.027	49.382	50.038	49.543	50.053	49.370
Standard Deviation	0.019	0.010	0.017	0.013	0.017	0.010	0.018	0.010
Variance	0.000345	0.000108	0.000281	0.000164	0.000296	9.13E-05	0.000333	9.26E-05
Skewness	0.206308	-0.12379	0.228795	-2.64972	0.184023	-0.02925	-0.04435	-0.09848
Range	0.092	0.046	0.081	0.101	0.085	0.039	0.097	0.039
Minimum	50.014	49.322	49.991	49.3	49.999	49.523	50	49.349
Maximum	50.106	49.368	50.072	49.401	50.064	49.562	50.097	49.388
Sum	4755.336	4638.524	4752.592	4641.764	4703.626	4657.001	4705.076	4640.725
Count	95	94	95	94	94	94	94	94
Stability +/- mK.	46	23	40.5	50.5	42.5	19.5	48.5	19.5
Direct Channel Avr.	50.044	Maximum Variation between Direct probes						
Ch0 Var. from Avr.	0.012	Varmax Direct = 0.029 DegC.						
Ch2 Var. from Avr.	-0.017							
Ch4 Var. from Avr.	-0.005							
Ch6 Var. from Avr.	0.010							
Insert Channel Avr.	49.410	Maximum Variation between Insert probes						
Ch1 Var. from Avr.	-0.064	Varmax Insert = 0.197 DegC.						
Ch3 Var. from Avr.	-0.029							
Ch5 Var. from Avr.	0.133							
Ch7 Var. from Avr.	-0.040							

B550 Block Calibrator Test Data at 100 DegC, 26/01/94

Statistics	Ch0	Ch1	Ch2	Ch3	Ch4	Ch5	Ch6	Ch7
Mean	99.137	97.677	99.104	97.854	99.130	97.895	99.155	97.754
Median	99.139	97.677	99.110	97.855	99.131	97.895	99.156	97.755
Standard Deviation	0.014	0.009	0.015	0.009	0.014	0.009	0.014	0.009
Range	0.057	0.042	0.071	0.039	0.063	0.042	0.06	0.043
Minimum	99.107	97.656	99.074	97.834	99.097	97.873	99.122	97.731
Maximum	99.164	97.698	99.145	97.873	99.16	97.915	99.182	97.774
Sum	7237.034	7032.761	7334.078	7045.505	7236.49	7244.253	7337.499	7233.828
Count	73	72	74	72	73	74	74	74
Stability +/- mK	28.5	21	35.5	19.5	31.5	21	30	21.5
Direct Channel Avr.	99.133	Maximum Variation between Direct probes						
Ch0 Var. from Avr.	-0.004	Varmax Direct = 0.046 DegC.						
Ch2 Var. from Avr.	0.024							
Ch4 Var. from Avr.	0.003							
Ch6 Var. from Avr.	-0.022							
Insert Channel Avr.	97.795	Maximum Variation between Insert probes						
Ch1 Var. from Avr.	0.118	Varmax Insert = 0.218 DegC.						
Ch3 Var. from Avr.	-0.059							
Ch5 Var. from Avr.	-0.100							
Ch7 Var. from Avr.	0.041							

B550 Block Calibrator Test data at 200 DegC, 26/01/94

Statistics	Ch0	Ch1	Ch2	Ch3	Ch4	Ch5	Ch6	Ch7
Mean	199.549	196.857	199.519	197.110	199.556	197.030	199.605	196.811
Median	199.549	196.857	199.520	197.109	199.557	197.029	199.607	196.812
Standard Deviation	0.014	0.008	0.014	0.009	0.014	0.010	0.013	0.010
Range	0.066	0.034	0.072	0.039	0.071	0.039	0.066	0.04
Minimum	199.513	196.839	199.479	197.09	199.516	197.008	199.569	196.788
Maximum	199.579	196.873	199.551	197.129	199.587	197.047	199.635	196.828
Sum	18358.48	18307.73	18555.28	18331.23	18558.66	18323.77	18563.28	18303.38
Count	92	93	93	93	93	93	93	93
Stability +/- mK.	33	17	36	19.5	35.5	19.5	33	20
Direct Channel Avr.	199.557	Maximum Variation between Direct probes						
Ch0 Var. from Avr.	-0.008	Varmax Direct = 0.086 DegC.						
Ch2 Var. from Avr.	-0.038							
Ch4 Var. from Avr.	-0.002							
Ch6 Var. from Avr.	0.048							
Insert Channel Avr.	196.952	Maximum Variation between Insert probes						
Ch1 Var. from Avr.	-0.095	Varmax Insert = 0.299 DegC.						
Ch3 Var. from Avr.	0.158							
Ch5 Var. from Avr.	0.078							
Ch7 Var. from Avr.	-0.141							

Figure 7. Block at 125 Degrees Celsius

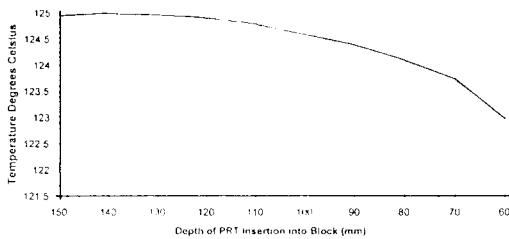
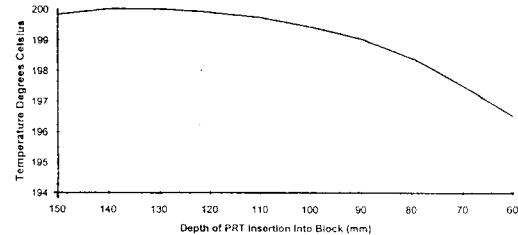


Figure 8. Block at 200 Degrees Celsius



The graphs above, Figure 7 at 125°C and Figure 8 at 200°C, show the vertical gradient of temperature in the B550 block.

The PRT used was the T100-250. The resulting temperature gradient is exaggerated by the insertion depth of the PRT itself to the point where the detector within the PRT is near the top surface of the block.

The stem losses of the PRT will increase as more surface area is exposed to the air. This cooling affect will again reduce the actual temperature.

11. Appendix 2 Wiring connections for DIN connector

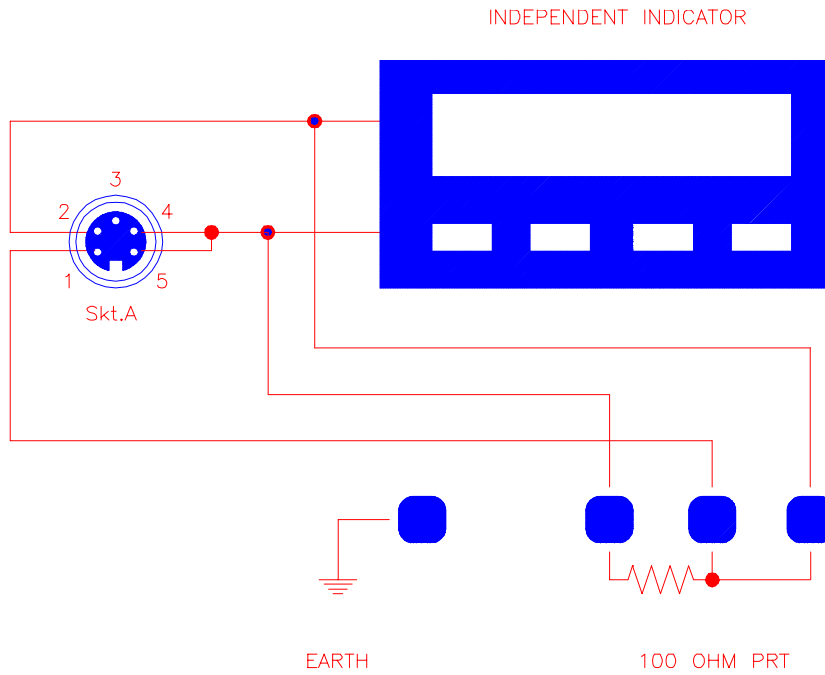


Figure 9. Wiring Diagram for Independent Indicator.

12. Appendix 3 Factory Settings

Description	Parameter	B550				B700	
		1	0.1	1	0.1	1	1
RESOLUTION REQUIRED		1	0.1	1	0.1	1	1
Configuration Mode		Deg C	Deg C	Deg F	Deg F	Deg C	Deg F
Input Code		7220*	7222	7221	7223	7220*	7221
Output 1 Action	Ctrl	rEU				rEU	
Alarm 1 Action	ALA1	P-Lo				P-Lo	
Alarm 2 Action	ALA2	P-hi				P-hi	
Alarm Inhibit	Inhi	nonE				nonE	
Output 2 Usage	USE2	Or-r				Or-r	
Lock Code	Loc	8 (Initially 10)				8 (10)	
Setup Mode							
Digital Filter Time Constant	Filt	0				0	
Process Variable Offset	OFFS	0				0	
Output Power	Out1	Fixed				Fixed	
Proportional Band 1	Pb1	1				1	
Rate Integral Time Constant	rSEt	0.32	0.46	0.32	0.46	0.32	0.32
Rate Derivative Time Constant	rAtE	0.08	0.11	0.08	0.11	0.08	0.08
Manual Rest Bias	biAS	25				25	
Set Point High Limit	SPhi	550	532	1022	989	700	1292
Set Point Low Limit	SPlo	0		32		0	32
Output 1 Power Limit	OPhi	100				100	
Output Cycle Time	Ctl	0.5				0.5	
Process Low Alarm 1	l-A1	0		32		0	32
Process High Alarm 2	h-A2	555	537	1031	999	705	1301
Loop Alarm Enable	LAEn	0				0	
Auto Pre Tune Enable	Apt	0				0	
Manual Control Enable	PoEn	0				0	
Setpoint Ramp Enable	rPEn	0				0	
Setpoint Strategy	SPSt	1				1	
Communications Enable	CoEn	0 (1 if RS485 fitted)				0 or 1 A/R	
Lock value	Loc	8				8	

* Factory default



WARNING

Read section 3.5 before altering the controller's parameters, in particular the setpoint limits. Exceeding the maximum temperature may cause permanent damage.

NOTES