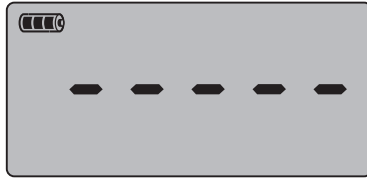
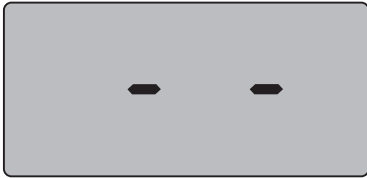


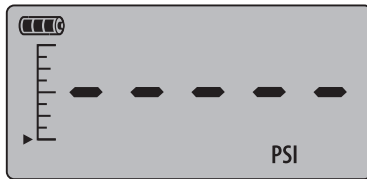
# m1 Quick Reference



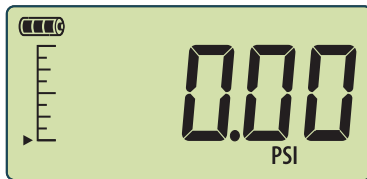
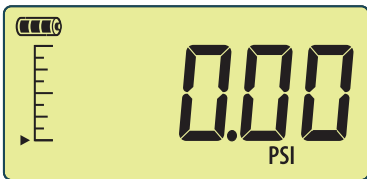
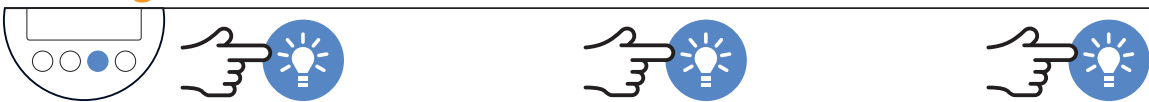
## Power On



## Zero



## Backlight



## Power Off



CRYSTAL  
engineering corporation

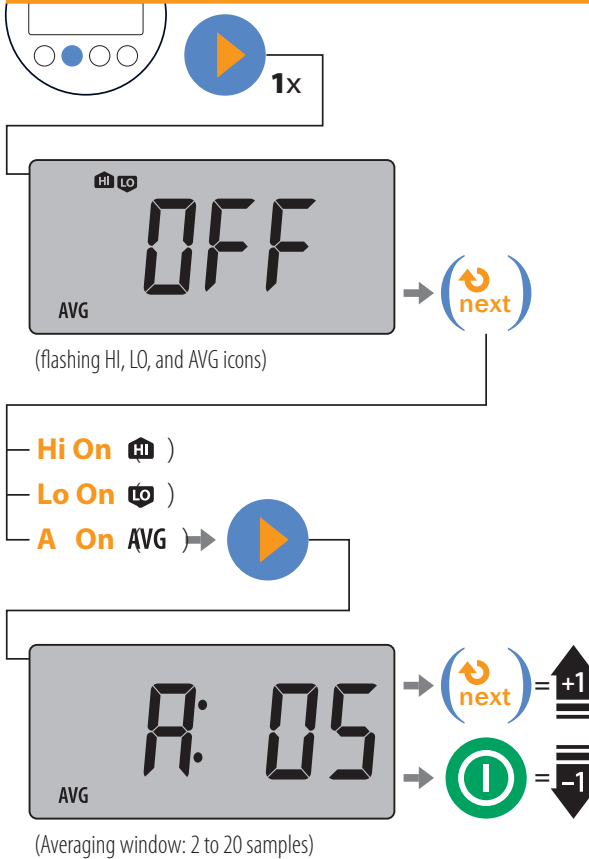
**Note:** Pressing the **enter** button always returns the gauge to operating mode. If you want to set multiple Display Functions, press the **setup** button to navigate from one Display Function to the next, then press the **enter** button when you are done.

## Gauge Setup Basics

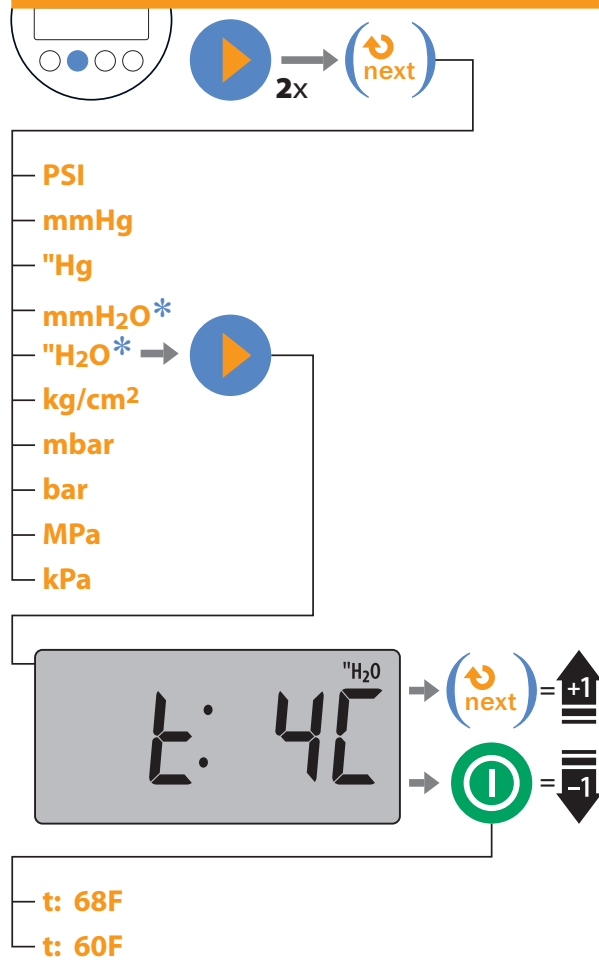


## Gauge Setup Map

### Maximum, Minimum, or Averaging



### Pressure Units



All units are not available with every pressure range.

\* H<sub>2</sub>O icons and temperature settings will only display on H<sub>2</sub>O enabled units.





## Gauge Setup Map continued

### Vertical Bar Graph



- On** (solid Bar Graph)
- Off** (flashing Bar Graph)

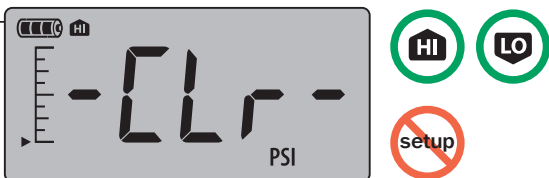


### Backlight Timer

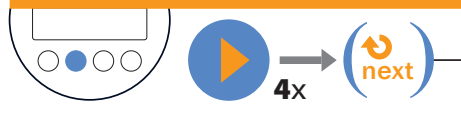


- Lt: 15** (light stays on for 15 seconds)
- Lt: 60** (light stays on for 60 seconds)
- Lt: On** (light does not turn off automatically)

### To Clear Peaks or Line Pressure

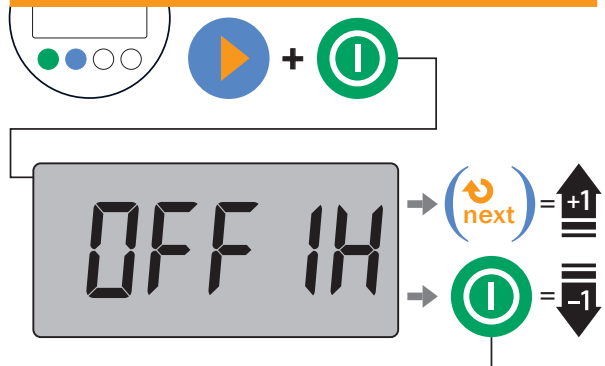


### Auto Off



- Off 1H** (gauge turns off after 1 hour)
- Off --** (gauge does not turn off automatically)

### Readings per Minute Settings (Extended Battery Life)\*



- rd 0.1**..... (1/10 minutes 30,000 hours)
- rd 0.2**..... (1/5 minutes 25,000 hours)
- rd 1.0**..... (1/1 minute 10,000 hours)
- rd 2.0**..... (1/30 seconds 6,000 hours)
- rd 4.0**..... (1/15 seconds 3,000 hours)
- Off --** ..... (4/1 second 600 hours)
- Off 1H**..... (4/1 second 600 hours)

Whenever one of the **rd** settings is selected the battery icon will change from to indicating that the M1 is in power-saving mode.

\*This menu can be accessed only when the gauge is **off**.

**Note:** If there is no gauge activity for 10 seconds, the gauge will return to operating mode. Any Setup options that you have selected will be enabled.

**CRYSTAL**  
engineering corporation

[www.crystalengineering.net](http://www.crystalengineering.net)

## Specifications

### Accuracy, Pressure

20% to 100% of Full Scale:  $\pm$  (0.2% of Reading).  
0 to 20% of Full Scale:  $\pm$  (0.04% of Full Scale).

### Accuracy, Vacuum

Vacuum for 2MPa (300PSI, 20bar, 20kg/cm<sup>2</sup>) and lower pressure gauges:  
0 to -99.9 kPa (-14.5 PSIG):  $\pm$  (0.25% of Full Scale), where F.S.: -99.9 kPa (-14.5 PSIG).  
(Not recommended for continuous use at high vacuum)

### Operating Temperature Range

-10°C to +50°C (14°F to 122°F)  
No change in accuracy over operating temperature range. Gauge must be zeroed to achieve rated specification.

### Storage Temperature Range

-40°C to +75°C (-40°F to 167°F).

### Overpressure Capability

Minimum 1.5x Range.

### Display

Numerical Display height: 16.8mm (0.66").  
Description: 5 full (seven segment) digits.  
Display rate: 4 readings per second.  
(The display rate can be modified to a reading every 15 seconds, 30 seconds, 1 minute, 5 minutes, and 10 minutes.)

the  
**m1**  
pressure  
G · A · U · G · E



P/N: 3416 – Rev A

### Over Scale Limit

Display will flash at 110% of Full Scale.

### Fitting

¼" NPT or  
G 1/4 B (ISO 228-1 threads per EN-837-1).

### Batteries

2 x AA alkaline (LR6) batteries.  
Battery life (backlight off—rd 0.1[1 reading per 10 minutes]): 30,000 hours  
Battery life (backlight on): approximately 50 hours at maximum brightness.

**Caution:** Do not overtighten rear cover when replacing batteries.

### Sensor

Piezoresistive silicon sensor with permanent oil isolation system and integral filter.  
All wetted surfaces are 316 Stainless Steel.  
All welded design (no o-rings, thread tape, epoxy, or sealant on any part of sensor assembly).

### Enclosure

Water resistant housing incorporating o-ring seals.  
Polyester/Polycarbonate blend compatible with Skydrol<sup>(TM)</sup> and common industrial fluids.

### Additional Features

Vertical bar graph (arrow disappears in vacuum).  
Minimum (LO) and maximum (HI) capture.  
Averaging (2 to 20 samples).

**Note:** Specifications include all the effects of linearity, hysteresis, repeatability, temperature, and stability for one year.

